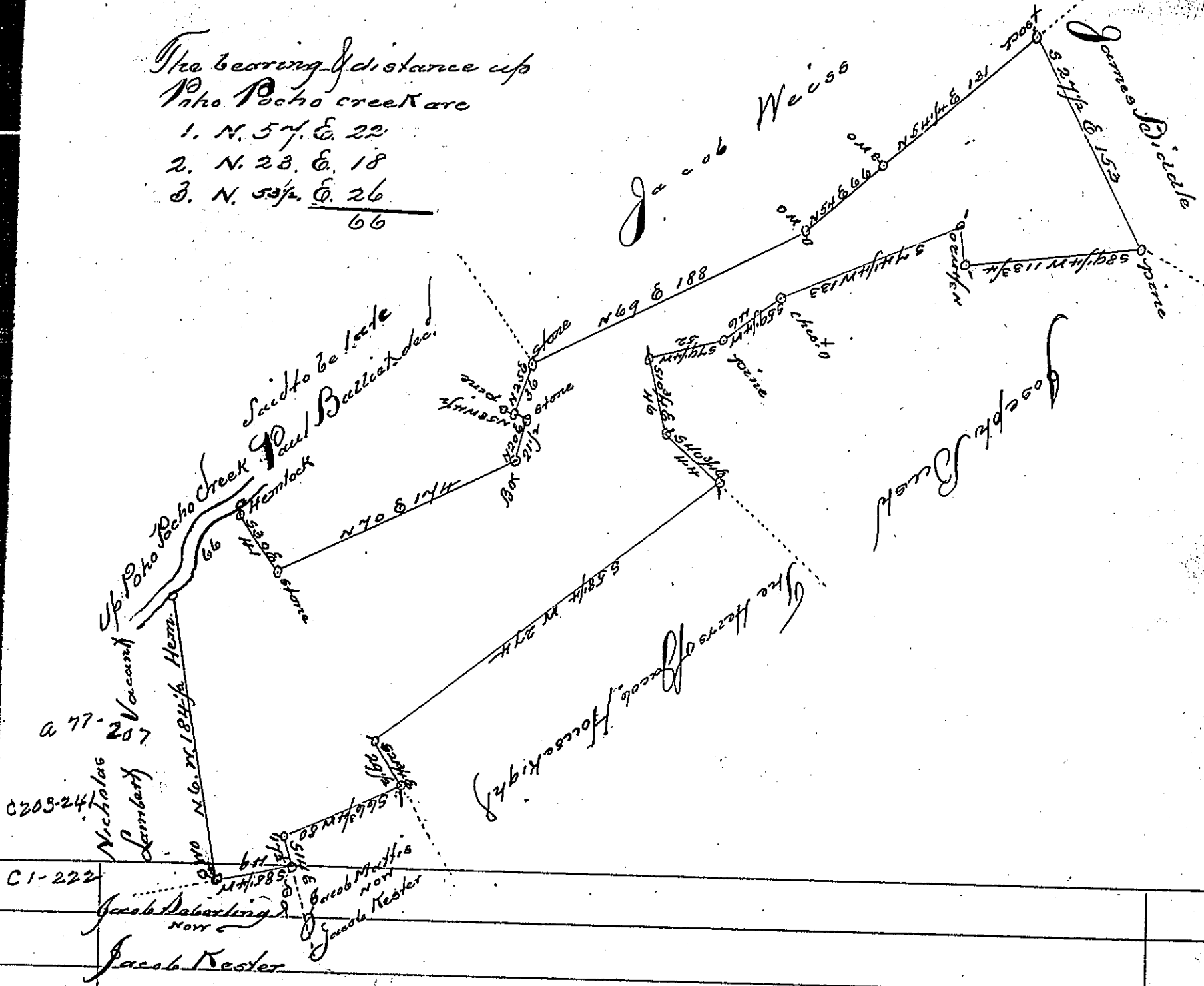


The bearing & distance up
 into Poho creek are
 1. N. 57. E. 22
 2. N. 28. E. 18
 3. N. 53. E. 26
 66



a 77-207
 C203-241
 C1-222
 C189-296

dated the
 By virtue of a warrant the 12th January 1893 Surveyed the 1st April
 1894 to Thomas Craig the above described tract of land situated in
 Town of Township Northampton County, containing four
 hundred and twelve acres a quarter and the allowed of six ¹⁰/₁₀₀ Cents
 Year

To Daniel Brodhead Esq^r
 Surveyor General

P. Geo. Palmat D. J.

IN TESTIMONY that the above is a copy of the original remaining on file in
 the Department of Internal Affairs of Pennsylvania, made
 conformably to an Act of Assembly approved the 16th day of
 February, 1833, I have hereunto set my Hand and caused
 the Seal of said Department to be affixed at Harrisburg,
 this Twenty-first day of March, 1904.

Isaac P. Brown
 Secretary of Internal Affairs.